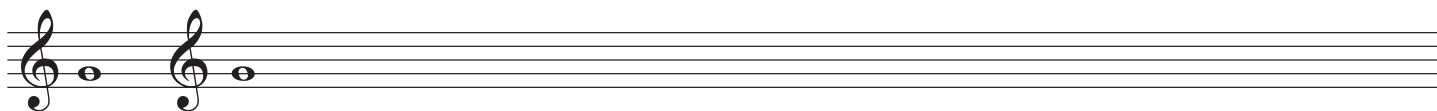


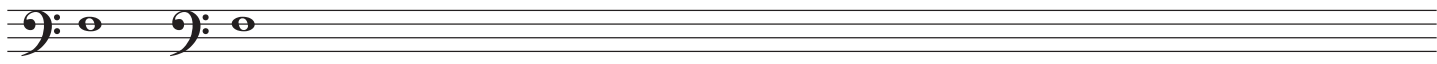
LINE AND SPACES

Instructions: These worksheets assume that you have watched the music theory videos posted on Cascadia's website. If you don't understand everything on the worksheet, review the video or email me. I will also be scheduling Zoom sessions for discussions. Happy Music Learning!!

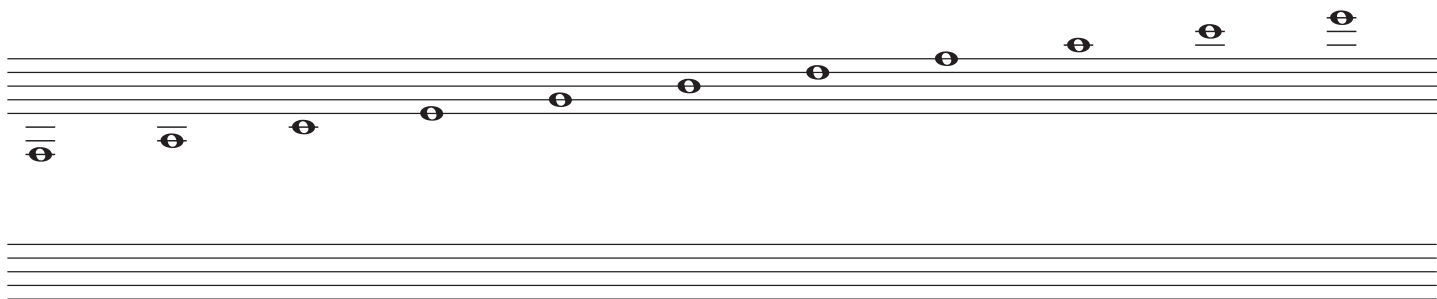
1. Say the musical alphabet forwards and backwards. Repeat.
2. (FYI, the five lines of the staff are numbered bottom to top--don't ask me why). Practice drawing the Treble clef (G-clef) and a G for each clef.



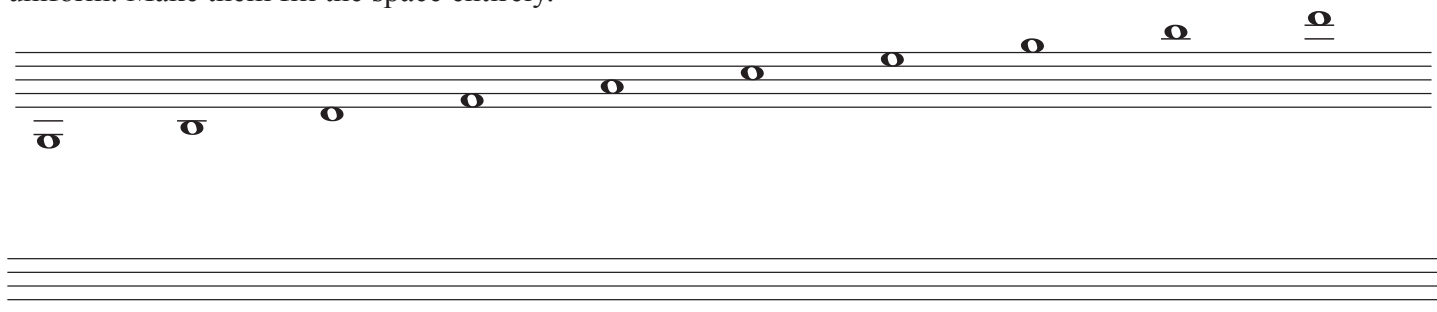
3. Practice drawing the Bass clef (F-clef) and an F for each clef.



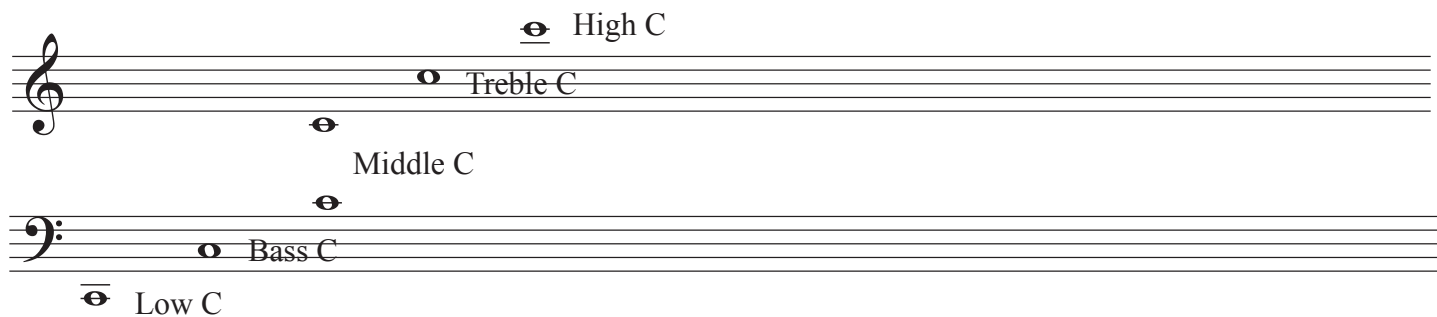
4. Practice drawing a note on every line of the staff. Also draw a note on each ledger line, as shown below and above the staff. Make the notes uniform and round. Make sure they don't overlap another line.



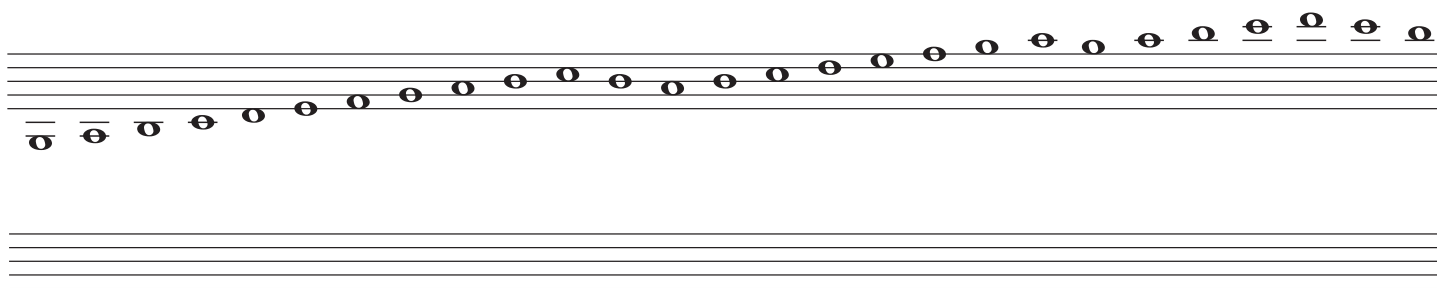
5. Practice drawing notes in the spaces, including the spaces between the ledger lines. Make the notes uniform. Make them fill the space entirely.



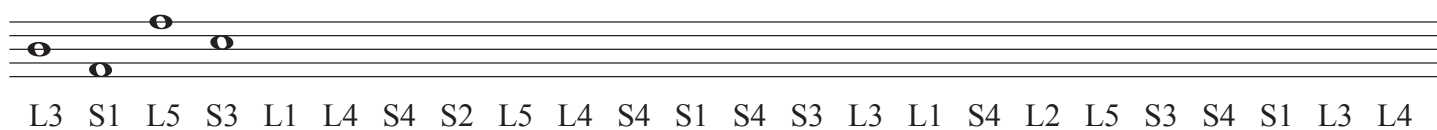
6. The following notes are all Cs. Practice writing them and notice their symmetry.



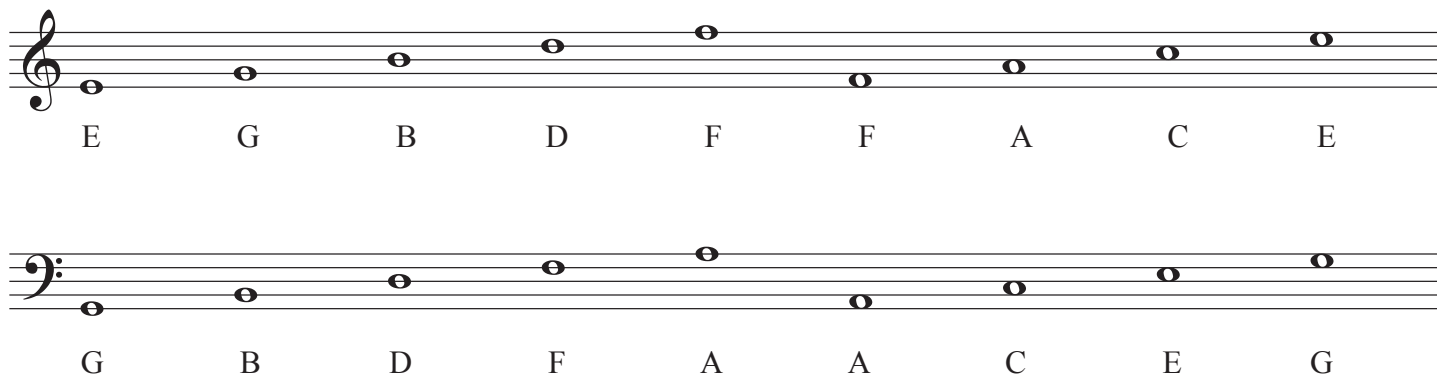
7. Practice writing space and line notes, up and down the staff. At this time, the goal is to recognize that the notes are alternating spaces and lines. Use ledger lines, too.



8. HEAD'S UP! This should be a challenge. Draw a note for each line and space, as described. Remember, the lines are numbered bottom to top.



9. Because all instruments are different, the purpose of the clefs is to show notes in a particular range. Treble and Bass Clef lines and spaces are as follows. Practice writing and labeling the notes.



10. Practice writing the notes of musical alphabet, as follows. Draw and label each note.

A B C D.....

C D E F G....

11. Now write the notes descending, as follows. Draw and label each note.

C B A G F...

E D C B A.....

12. Fill the following staves with notes. Label them.